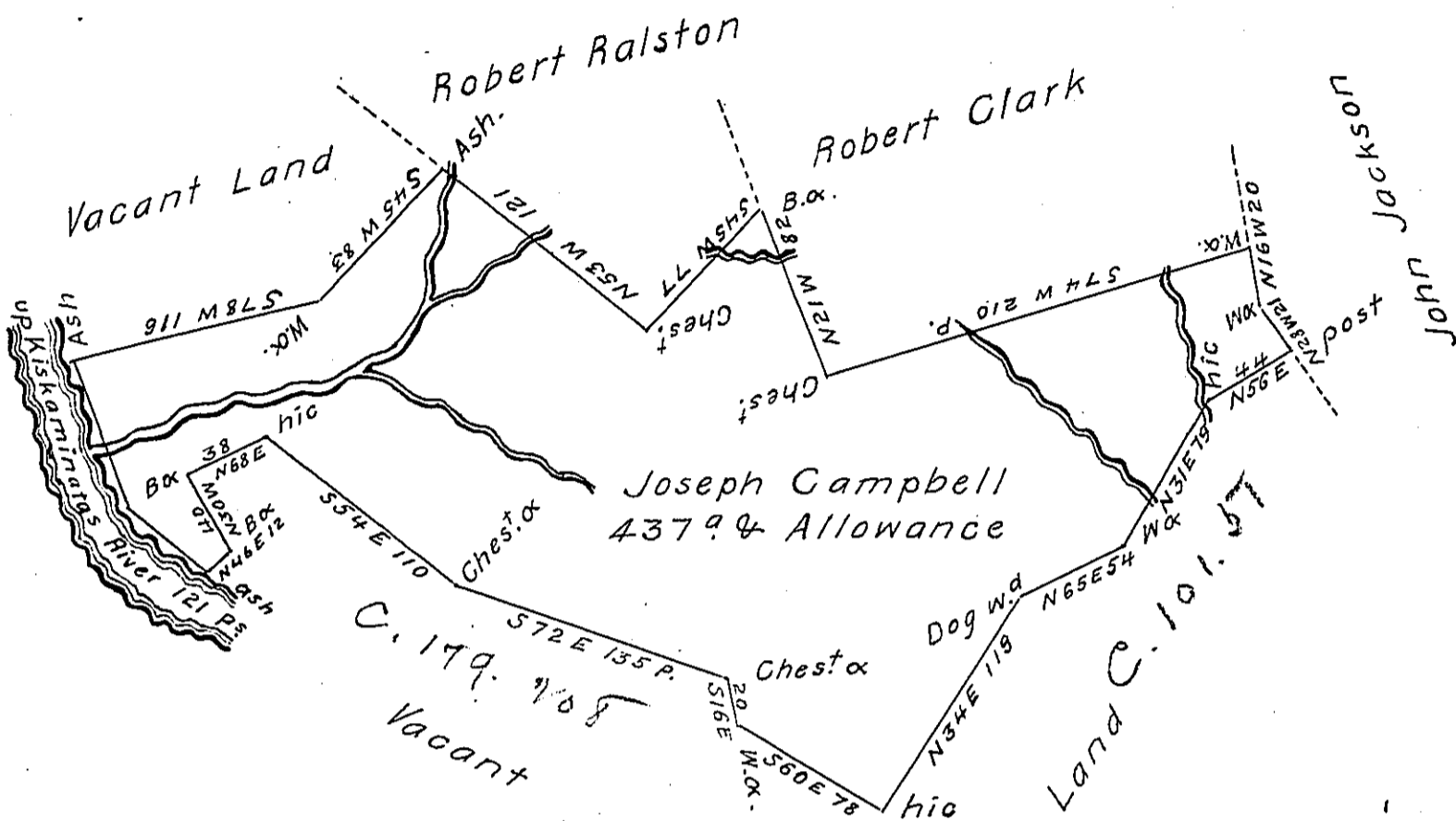


Courses & Distances up the River

S 20 E 72
S 52 E 49
in all 121 P's



Surveyed to Joseph Campbell on the 17th April 1788 the above Described Tract of Four Hundred and thirty seven acres and Allowance of six P's Gent. Situate two miles South West from Thomas Nichols Improvement, at the head of a Spring running into the second Fork of Gushanock, in Westmoreland County, By warrant of the 2^d July 1784.

Joshua Elder D.S.

John Lukens Esq. S. Gen!

IN TESTIMONY that the above is a copy of the original remaining on file in the Department of Internal Affairs of Pennsylvania, made conformably to an Act of Assembly approved the 16th day of February, 1833, I have hereunto set my Hand and caused, the Seal of said Department to be affixed at Harrisburg, this thirteenth day of May 1904.

Joseph P. Brown
Secretary of Internal Affairs.